



WATSON GILES HARDING, "Watso," Saranac Lake. Arts and Sciences. Age, twenty-one. Prepared at Saranac Lake High School. Four years at Cornell. Delta Tau Delta; Varsity Hockey Team 2, 3, Captain-Elect 4; Adirondack Club.

ALLRICH SCHEPER HARRISON, "Fish," New York City. Civil Engineering. Age, twenty-two. Prepared at Phillips Exeter Academy. Four years at Cornell. Alpha Delta Phi; Semaphore; Freshman Track Team; Varsity Track Team; Freshman Cap-burning Committee; Freshman Advisory Committee.

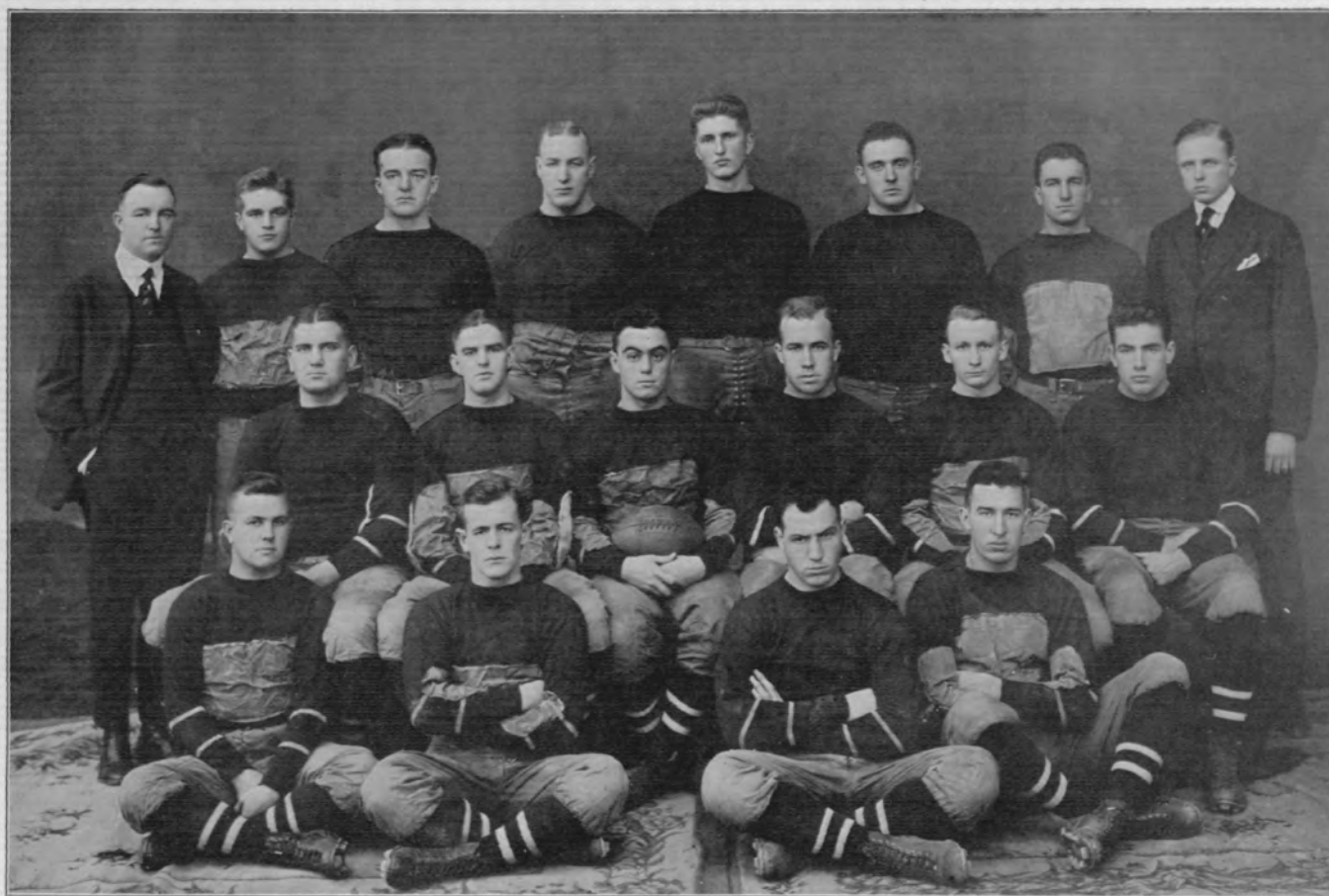
HENRY ERNEST HASLETT, Seneca. Agriculture. Age, thirty-four. Prepared at Geneva High School. Four years at Cornell. Alpha Pi Rho.

JOHN HENRY HATHAWAY, "Jack," New York City. Arts and Sciences. Age, twenty-one. Prepared at Trinity School. Four years at Cornell. Theta Xi; *Cornell Countryman* Board 1, 2.

FRANK HAUCKE, "Chief," Council Grove, Kan. Agriculture. Prepared at Kansas University. Two years at Cornell. Sigma Alpha Epsilon; Varsity Football Squad 2.

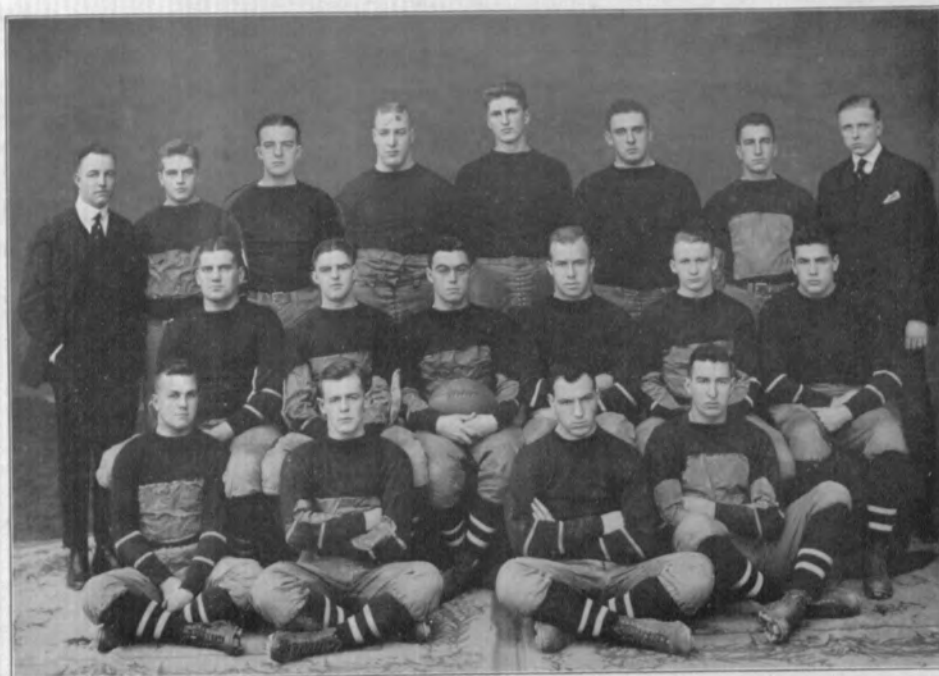
JOHN HUYLER HAUPT, "Hy," New York City. Arts and Sciences. Age, twenty. Prepared at Stuyvesant High School. Delta Chi; Assistant Manager Dramatic Club 3, Manager 4.





1916 VARSITY FOOTBALL TEAM Copyright J. P. Troy

LALLEY	SHIVERICK	CARRY	GILLIES	JEWETT	MILLER	HOFFMAN	KUHNS
ANDERSON	ECKLEY	MUELLER	BROWN	ZANDER	BENEDICT		
SPEED	RYERSON	BAIRD	HAUCKE				



Copyright J. P. Troy

LALLEY	SHIVERICK	CARRY	GILLIES	JEWETT	MILLER	HOFFMAN	KUHNS
ANDERSON	ECKLEY	MUELLER	BROWN	ZANDER	BENEDICT	HAUCKE	
SPEED		RYERSON		BARD			

1916 Varsity Football Team

ROY JOHN ZANDER, '17	Left End
ROBERT EMMETT RYERSON, '18	Left End
FREDERICK MONTAGUE GILLIES, '18	Left Tackle
PETER PAUL MILLER, '18	Left Guard
GEORGE PHILIP BARD, '17	Left Guard
JOSEPH CHAMP CARRY, '18	Center
WISER BROWN, '17	Center
EDWARD EWEN ANDERSON, '17	Right Guard
REXFORD WILBER JEWETT, '17	Right Tackle
PAUL WITHERSPOON ECKLEY, '17	Right End
FRANCIS TOBEY SHIVERICK, '18	Quarter Back
ARTHUR LEWIS HOFFMAN, '18	Left Half Back
CHRISTOPHER MACNAIR SPEED, '18	Left Half Back
HORACE GUION BENEDICT, '18	Right Half Back
FRANK HAUCKE, '17	Right Half Back
LUCIEN WILBER MUELLER, '17	Full Back

SUBSTITUTES

LUDLOW EARLE BRETZ, '19	EDWIN JAMES HOFF, '19
JOHN WESLEY CRAIG, '19	MANLEY STOWELL INSCHO, '18
WESLEY MOON DIXON, '18	WILLIAM STANLEY MCCORMICK, '17
JOHN THOMAS EILENBERGER, '18	WILBERFORCE TAYLOR, '18
GEORGE FREDERICK ENSWORTH, '19	CLARENCE TILLEY, '17
WALTER GORDON FISCHER, '17	FRANCIS MARVIN SUTTON, JR., '19

WALTER ROWE LALLEY	Manager	LUCIEN WILBER MUELLER	Captain
RESIDENT COACHES			
DANIEL A. FEED, '89	ALBERT H. SHARPE, Head Coach	RAY VAN ORMAN, '08	

1917

Two of Harvard's touchdowns came as a direct result of fumbling. Shiverick's fumble of a punt near the end of the first period gave the ball to Harvard on the Cornell 35-yard line. A forward pass, unmolested by Cornell, took the ball to the 17-yard line where on the first play of the second quarter Casey shook off the whole Cornell eleven and scored the first touchdown. The last Harvard touchdown was even more of a gift. Cornell had stopped the Harvard rushes and gained the ball on her own 7-yard line when Haucke, who had been substituted for Hoffman, juggled the ball right into the arms of Sweetser, the Harvard left tackle, enabling him to cross the goal line for the final score.

On their return to Ithaca the players set their teeth and went quietly to work. By the time of the game with Carnegie Tech. which Cornell won by the score of 15 to 7, the team already showed an improvement in individual play, yet it was plain that it had not regained its stride. Loose tackling and slow thinking coupled with poor work on the part of the ends allowed Carnegie to make many long gains which were discouraging to those who believed that the team could come back after its defeat at the hands of Harvard. Speed started the game instead of Shiverick until the final period when the latter took his place and the former displaced Hoffman. At this point in the game the team seemed to awaken a bit from its lethargy and it advanced the ball with comparative ease.

But the Cornell football team of 1916 "found itself" on the following Saturday, November 11th. With the stand on Schoellkopf Field packed with 12,000 spectators, Cornell defeated Michigan in what was perhaps the most thrilling game seen in Ithaca in many years. At first Cornell led but then Michigan came up from behind and at the end of the first half the score was 20 to 6 in her favor. A long forward pass thrown by Peach and caught by Dunne repeated several times led to two touchdowns, and Michigan's end runs and off tackle rushes found little resistance. At this point it seemed that Michigan was in every respect the superior team. The Michigan men were fast and in every play, whereas the Cornell interference was utterly ineffective. But in the last twenty minutes of the game it was a different story. The Cornell team began to think and play a brand of football that was irresistible. It could not be driven out of Michigan



BARD

HAUCKE

ZANDER

HOFFMAN